

MSBS Elephant



Oil Pattern Distance:	41 Feet	Reverse Brush Drop:	41 Feet	Oil Per Board:	40 uL
Forward Oil Total:	18.8 mL	Reverse Oil Total:	12.8 mL	Volume Oil Total:	31.6 mL
Forward Boards Crossed:	470 Boards	Reverse Boards Crossed:	320 Boards	Total Boards Crossed:	790 Boards

	Start	Stop	Loads	Speed	Crossed	Start	End	Feet	T.Oil
1	2L	2R	5	10	185	0.0	5.6	5.6	7400
2	2L	2R	3	14	111	5.6	11.5	5.9	4440
3	6L	6R	2	14	58	11.5	15.4	3.9	2320
4	7L	7R	2	14	54	15.4	19.3	3.9	2160
5	8L	8R	1	18	25	19.3	21.8	2.5	1000
6	2L	2R	1	18	37	21.8	24.3	2.5	1480
7	2L	2R	0	30	0	24.3	41.0	16.7	0

Forward Reverse More

	Start	Stop	Loads	Speed	Crossed	Start	End	Feet	T.Oil
1	2L	2R	0	30	0	41.0	34.0	-7.0	0
2	8L	8R	1	14	25	34.0	32.1	-1.9	1000
3	7L	7R	1	14	27	32.1	30.2	-1.9	1080
4	6L	6R	2	18	58	30.2	25.1	-5.1	2320
5	5L	5R	2	18	62	25.1	20.0	-5.1	2480
6	2L	2R	2	22	74	20.0	13.8	-6.2	2960
7	2L	2R	2	30	74	13.8	5.3	-8.5	2960
8	2L	2R	0	10	0	5.3	0.0	-5.3	0

Forward Reverse More

Conditioner:
Type In or Select
One

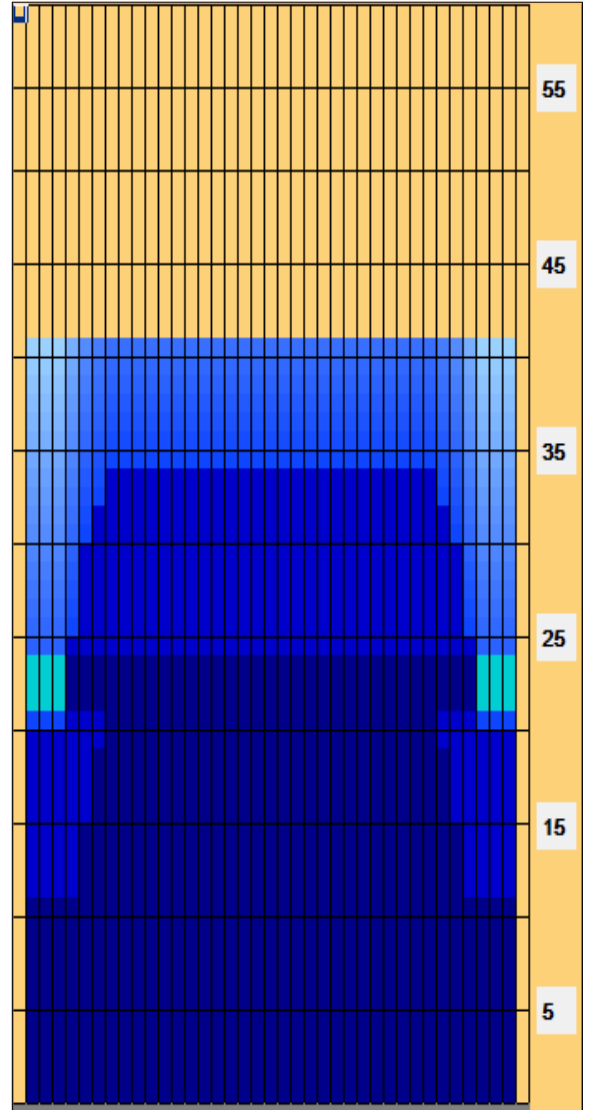
TransferType:
Type In or Select
One

Forward

Reverse

Combined

Buff



Item	3L-7L:18L-18R	8L-12L:18L-18R	13L-17L:18L-18R	18L-18R:17R-13R	18L-18R:12R-8R	18L-18R:7R-3R
Description	Outside Track:Middle	Middle Track:Middle	Inside Track:Middle	Middle: Inside Track	Middle:Middle Track	Middle:Outside Track
Track Zone Ratio	1.46	1	1	1	1	1.46

