

MSBS Twicks



Oil Pattern Distance: 42 Feet **Reverse Brush Drop:** 37 Feet **Oil Per Board:** 50 uL
Forward Oil Total: 18.2 mL **Reverse Oil Total:** 8.6 mL **Volume Oil Total:** 26.8 mL
Forward Boards Crossed: 364 Boards **Reverse Boards Crossed:** 172 Boards **Total Boards Crossed:** 536 Boards

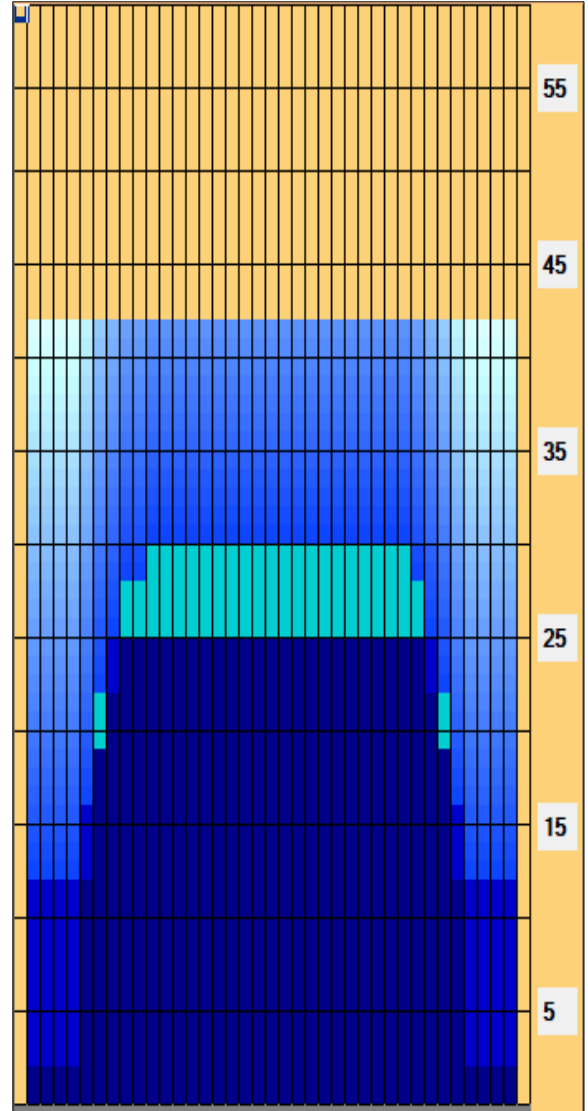
	Start	Stop	Loads	Speed	Crossed	Start	End	Feet	T.Oil
1	2L	2R	2	18	74	0.0	2.5	2.5	3700
2	6L	6R	4	18	116	2.5	12.7	10.2	5800
3	7L	7R	4	18	108	12.7	22.9	10.2	5400
4	9L	9R	2	18	46	22.9	28.0	5.1	2300
5	11L	10R	1	18	20	28.0	30.5	2.5	1000
6	2L	2R	0	22	0	30.5	42.0	11.5	0

	Start	Stop	Loads	Speed	Crossed	Start	End	Feet	T.Oil
1	2L	2R	0	30	0	42.0	25.0	-17.0	0
2	8L	8R	2	22	50	25.0	18.8	-6.2	2500
3	7L	7R	1	18	27	18.8	16.3	-2.5	1350
4	6L	6R	2	14	58	16.3	12.4	-3.9	2900
5	2L	2R	1	14	37	12.4	10.5	-1.9	1850
6	2L	2R	0	14	0	10.5	0.0	-10.5	0

Conditioner:
 Type In or Select One

 TransferType:
 Type In or Select One

- Forward
- Reverse
- Combined
- Buff



Item Description	3L-7L:18L-18R Outside Track:Middle	8L-12L:18L-18R Middle Track:Middle	13L-17L:18L-18R Inside Track:Middle	18L-18R:17R-13R Middle: Inside Track	18L-18R:12R-8R Middle:Middle Track	18L-18R:7R-3R Middle:Outside Track
Track Zone Ratio	2.97	1.06	1	1	1.04	2.97

