



# MSBS Potato (for transfer roller)

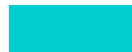
**Oil Pattern Distance:** 39 Feet      **Reverse Brush Drop:** 39 Feet      **Oil Per Board:** 40 uL  
**Forward Oil Total:** 20.12 mL      **Reverse Oil Total:** 12.76 mL      **Volume Oil Total:** 32.88 mL  
**Forward Boards Crossed:** 503 Boards      **Reverse Boards Crossed:** 319 Boards      **Total Boards Crossed:** 822 Boards

	Start	Stop	Loads	Speed	Crossed	Start	End	Feet	T.Oil
1	2L	2R	6	10	222	0.0	7.0	7.0	8880
2	7L	7R	5	14	135	7.0	16.9	9.9	5400
3	8L	8R	4	22	100	16.9	29.3	12.4	4000
4	9L	9R	2	22	46	29.3	35.5	6.2	1840
5	11L	11R	0	22	0	35.5	39.0	3.5	0

<< >> Forward Reverse More

Conditioner:  
 Type In or Select One  
  
 TransferType:  
 Type In or Select One

Forward



Reverse



Combined

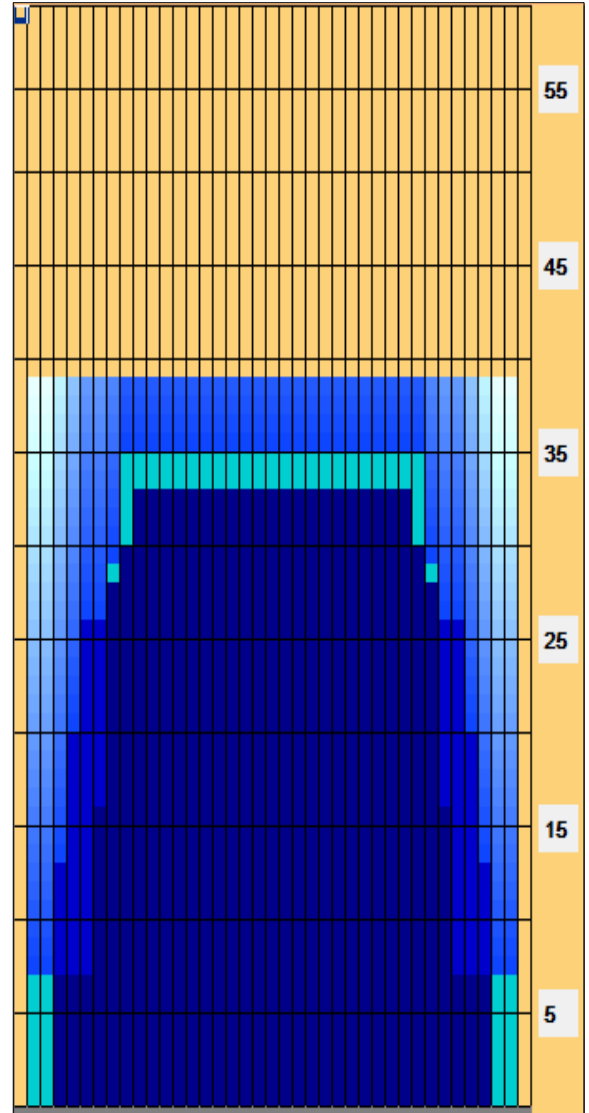


Buff



	Start	Stop	Loads	Speed	Crossed	Start	End	Feet	T.Oil
1	2L	2R	0	26	0	39.0	33.0	-6.0	0
2	10L	10R	1	18	21	33.0	30.5	-2.5	840
3	9L	9R	1	18	23	30.5	28.0	-2.5	920
4	8L	8R	1	18	25	28.0	25.5	-2.5	1000
5	6L	6R	2	18	58	25.5	20.4	-5.1	2320
6	5L	5R	3	18	93	20.4	12.8	-7.6	3720
7	4L	4R	3	18	99	12.8	5.2	-7.6	3960
8	2L	2R	0	22	0	5.2	0.0	-5.2	0

<< >> Forward Reverse More



This pattern is named after a spud

Item Description	3L-7L:18L-18R Outside Track:Middle	8L-12L:18L-18R Middle Track:Middle	13L-17L:18L-18R Inside Track:Middle	18L-18R:17R-13R Middle: Inside Track	18L-18R:12R-8R Middle:Middle Track	18L-18R:7R-3R Middle:Outside Track
Track Zone Ratio	2.33	1.04	1	1	1.04	2.33

