

# MSBS Polyanthus



Oil Pattern Distance:	34 Feet	Reverse Brush Drop:	34 Feet	Oil Per Board:	40 uL
Forward Oil Total:	8.16 mL	Reverse Oil Total:	4.8 mL	Volume Oil Total:	12.96 mL
Forward Boards Crossed:	204 Boards	Reverse Boards Crossed:	120 Boards	Total Boards Crossed:	324 Boards

	Start	Stop	Loads	Speed	Crossed	Start	End	Feet	T.Oil
1	2L	2R	2	22	74	0.0	3.1	3.1	2960
2	2L	2R	2	22	74	3.1	9.3	6.2	2960
3	6L	6R	1	26	29	9.3	12.9	3.6	1160
4	7L	7R	1	26	27	12.9	16.5	3.6	1080
5	2L	2R	0	26	0	16.5	34.0	17.5	0

Forward Reverse More

	Start	Stop	Loads	Speed	Crossed	Start	End	Feet	T.Oil
1	2L	2R	0	30	0	34.0	21.0	-13.0	0
2	7L	7R	1	22	27	21.0	17.9	-3.1	1080
3	6L	6R	1	22	29	17.9	14.8	-3.1	1160
4	5L	5R	1	22	31	14.8	11.7	-3.1	1240
5	4L	4R	1	10	33	11.7	10.3	-1.4	1320
6	2L	2R	0	10	0	10.3	0.0	-10.3	0

Forward Reverse More

Conditioner:  
Type In or Select  
One

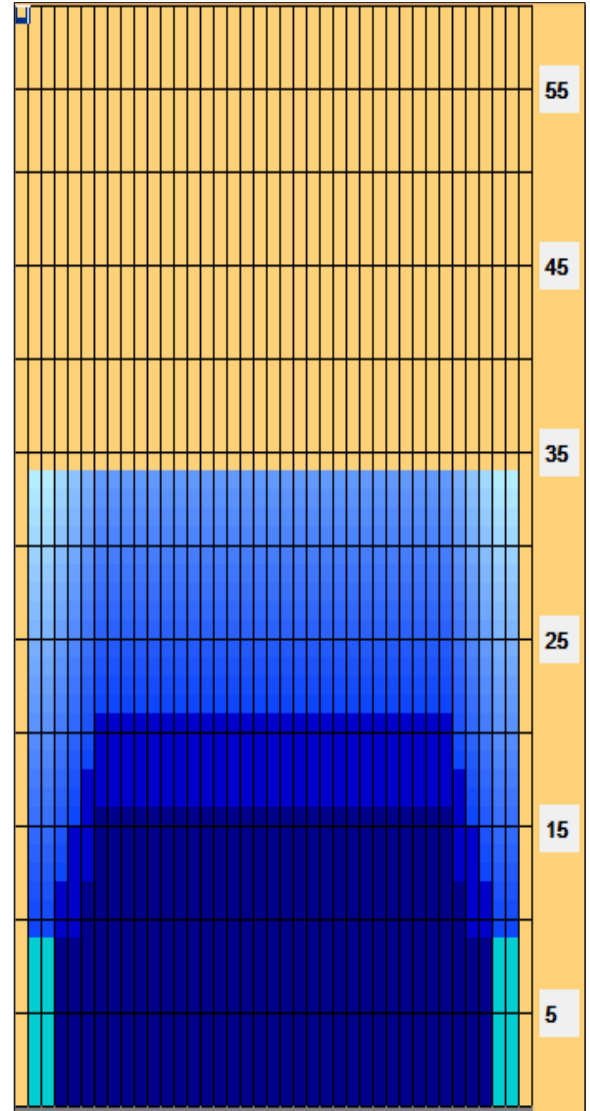
TransferType:  
Type In or Select  
One

Forward

Reverse

Combined

Buff



n. - The oxlip. So called because the peduncle bears a many-flowered umbel.  
See Oxlip. (b) A bulbous flowering plant of the genus Narcissus (N. Tazetta, or N. polyanthus of some authors).

Item	3L-7L:18L-18R	8L-12L:18L-18R	13L-17L:18L-18R	18L-18R:17R-13R	18L-18R:12R-8R	18L-18R:7R-3R
Description	Outside Track:Middle	Middle Track:Middle	Inside Track:Middle	Middle: Inside Track	Middle:Middle Track	Middle:Outside Track
Track Zone Ratio	1.52	1	1	1	1	1.52

